

# Training, Evaluation and Compliance (TEC) Unit

## State Staff

- Cheryl Bernard, MPA, Public Health Consultant  
[bernardc@michigan.gov](mailto:bernardc@michigan.gov)
- Joyce Bryant, MHSA, RD, Public Health Consultant  
[Bryantj5@michigan.gov](mailto:Bryantj5@michigan.gov)
- Nancy Erickson, MS, RD, CLE, Public Health Consultant  
[EricksonN@michigan.gov](mailto:EricksonN@michigan.gov)
- Heather Sanders, MA, CLS, Public Health Consultant  
[SandersH@michigan.gov](mailto:SandersH@michigan.gov)
- Kait Skwir, MS, RDN, Public Health Consultant  
[Skwirk2@michigan.gov](mailto:Skwirk2@michigan.gov)
- Gloria Zunker, MPA, RD, TEC Unit Manager  
[Zunkerg1@michigan.gov](mailto:Zunkerg1@michigan.gov)

## Management Evaluation Contractors

- Tina Hickey, BAA, CLS, Contractor, [HickeyT@michigan.gov](mailto:HickeyT@michigan.gov)
- Meryl Smith, MA, RD, CLS, Contractor, [SmithM131@michigan.gov](mailto:SmithM131@michigan.gov)
- Kevin Sarb, MS, MBA, RDN, Contractor, [SarbK1@michigan.gov](mailto:SarbK1@michigan.gov)

# Cheryl Bernard, MPA Public Health Consultant

*bernardc@michigan.gov*

Cheryl Bernard, MPA

Training Evaluation and Compliance Unit (TEC)



Public Health  
Consultant



Been with the  
State for 22 years  
21 in WIC



Consultant to 7  
local agencies

# Program Area Lead (PAL) Policies

- 1.04 - Fair Hearing
- 1.09 - Civil Rights
- 1.12 – Public Health  
Disaster/Emergency Planning  
and Coordination
- 2.04 – Income Determination
- 2.05 - Income Guidelines
- 2.18 – Notification of Clients  
Rights and Responsibilities
- 2.20 – Notification of  
Ineligibility, Mid-Certification  
Termination, and Expiration of  
Certification
- 9.01 – Client Compliance

# PAL Updated Policies

1.10

- Voter Registration  
5/12/2023

2.05

- Income Guidelines  
5/12/2023

2.06

- Adjunct Eligibility  
9/15/2023

# Trainings and Workgroup

Clerical Trainings

Anthropometric Trainings

Civil Rights Training

Clerk/Tech Workgroup

# A joke and an Inspirational Quote

- Why are the trees so carefree and easy going?
- Because every fall, they let loose!!

Joyce Bryant, MHSA, RD  
Public Health Consultant

[Bryantj5@michigan.gov](mailto:Bryantj5@michigan.gov)



# WIC FY 2024 (October 2023 – September 2024) TRAINING SCHEDULE

Trainings Scheduled Virtual and Face to  
Face Events





## OCTOBER 1, 2023 – SEPTEMBER 30, 2024 TRAINING/EVENT SCHEDULE

Revised: 9/28/23

### MENTORS AMONG US: THE ADVANCED CPA

November 1, 2023	Virtual
February 21, 2024	Virtual
April 17, 2024	Virtual

### ANTHROPOMETRICS

October 3, 2023	DoubleTree by Hilton Bay City - Riverfront	Bay City
March 27, 2024	In-Person	Grand Rapids
June 17, 2024	Virtual	
August 7, 2024	In-Person	SE Michigan

### CLERICAL

November 1-2, 2023	Virtual	
February 7-8, 2024	Virtual	
April 16, 2024	In-Person	Lansing
August 14-15, 2024	Virtual	

### COORDINATOR SUMMIT

October 24-25, 2023	DoubleTree Bay City	Bay City
---------------------	---------------------	----------

### CPA

Jan 31-Feb 1, 2024	Virtual	
April 30-May 1, 2024	Virtual	
July 24-25, 2024	In-Person	SE Michigan
September 10-11, 2024	Virtual	

### LABORATORY

October 4, 2023	DoubleTree by Hilton Bay City - Riverfront	Bay City
March 27, 2024	In-Person	Grand Rapids
June 18, 2024	Virtual	
August 7, 2024	In-Person	SE Michigan

### WIC CONNECT PLATFORM TRAINING

December 5, 2023	Virtual
June 4, 2024	Virtual

### WIC TRAINING AND EDUCATIONAL CONFERENCE

May 9-10, 2024	Grand Traverse Resort	Traverse City
----------------	-----------------------	---------------

For more information and to register for a live training opportunity as well as the full webcast schedule and registration, please visit

**MIWICEVENTS.COM**

# 2023-2024 TRAINING SCHEDULE

- <https://miwicevents.com/>



# LMS & Webcasts

- **Learning Management System**  
<https://miwicevents.com/learning-management-system/>
  - MI-WIC Clinic Module
  - MI-WIC Admin
  - MI-WIC Documenting HR Care Plans
  - WIC Nutrition Education
  - MI-WIC Continuity of Care
  - **WIC Civil Rights Training** for FY 2024 available for required annual training
  - **Systemic Racism** – meets Implicit Bias training directive, updated link to [MDHHS Health Equity](#) resources, or local agency approved Implicit Bias training
- **Webcasts**
  - **WIC Direct** Training in Webcast Catalog
  - **WIC Connect** Platform Training in Catalog and but sessions are also scheduled in December and June

+

•

○

# TRAINING/WIC CONFERENCE ATTENDANCE

- ANTHRO- 119
- CLERICAL- 198
- CPA- 210
- LAB- 104
- MENTORS AMONG US-
  - 51
- WIC CONFERENCE- 583
- A big thank you to MPHI for coordinating all of our events



**THANK YOU** for  
your support in  
completing the  
Nutrition  
Education and  
Breastfeeding  
Time Study!





CHIPPEWA ANTHRO ROOM

# Clinic Magic

- If you'd like to send pictures of your clinic areas, we'd love to share them with all of you.
- [bryantj5@michigan.gov](mailto:bryantj5@michigan.gov)
- Thank you!

Kait Skwir, MS, RDN  
Public Health Consultant

[Skwirk2@michigan.gov](mailto:Skwirk2@michigan.gov)



# PAL Policies

- \* Certification
  - \* 2.01 Eligibility/Certification of Clients
  - \* 2.02 Residency
  - \* 2.03 Identity
  - \* 2.09 Physical Presence
  - \* 2.10 Proof of Pregnancy
  - \* 2.11 Foster Child Eligibility
  - \* 2.12 Migrant Family Eligibility
  - \* 2.16 Hematological Assessment for Anemia
  - \* 2.17 Certification Periods
- \* Program Maintenance
  - \* 3.02(A) Waiting List Maintenance



## 2.16 Hematological Assessment for Anemia

### \* Change highlights

- \* Pending option now available for all LAs to use
- \* Referral data is acceptable to use
- \* Clarified testing schedule based on client category
- \* Removed requirements of LA policy for retesting

### \* Pending Lab Report

## 2.17 Certification Periods

### \* Change highlights

- \* Income, residency and identity are now all 30 day short certs for missing proof
- \* 2 out of 3 proofs must be present to complete appt with a short cert; if more than one is missing, the appt cannot be completed and must be rescheduled
- \* Electronic proofs can be accepted
- \* Proof of Pregnancy remains separate, is not included in the count of 3, and is a 60 day short cert if missing

# 2024 WIC Conference

2024 MICHIGAN WIC TRAINING  
& EDUCATIONAL CONFERENCE

**SAVE THE DATE!**

May 9-10, 2024  
GRAND TRAVERSE RESORT  
TRAVERSE CITY, MI

[miwicconference.com](https://miwicconference.com)



# Nancy Erickson, MS, RD

## Public Health Consultant

*EricksonN@michigan.gov*



# Management Evaluations

2023 MEs Conducted In-person



# ME Summary

Three Agencies with No Findings

Most common findings were:

- Not contacting client within 2 days after issuing breast pump (6.5d)-16 LA
- No Follow up to Previous Nutrition Ed Doc (6.2b)-7 LA

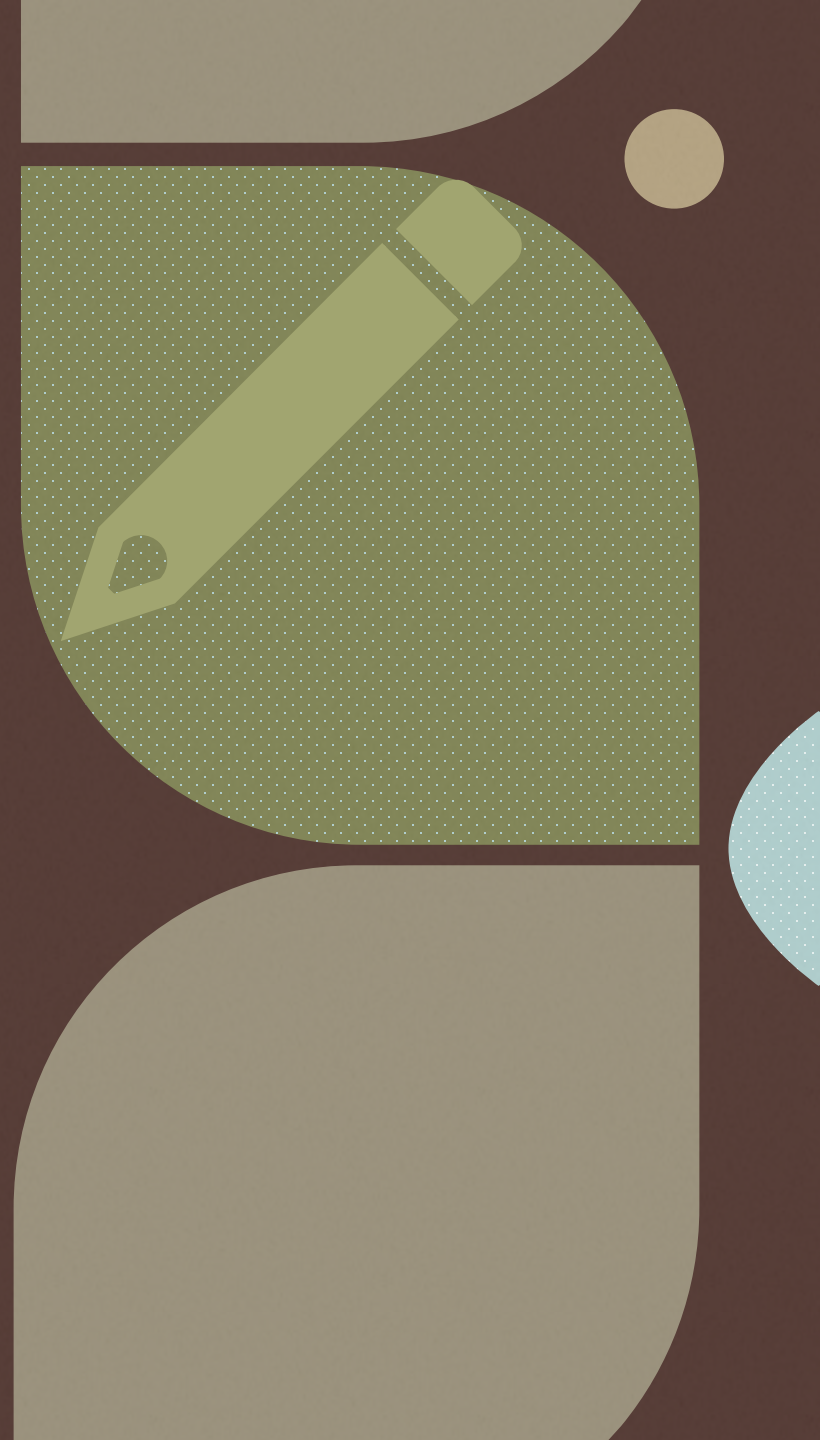
## ME Summary Continued

Most common findings were:

- Not contacting BF client within 2 days (6.5d)
- HR Documentation (6.6B)
- Special Formula Errors (7.3A)
- Breast Pump Release or Receipt (9.1a)

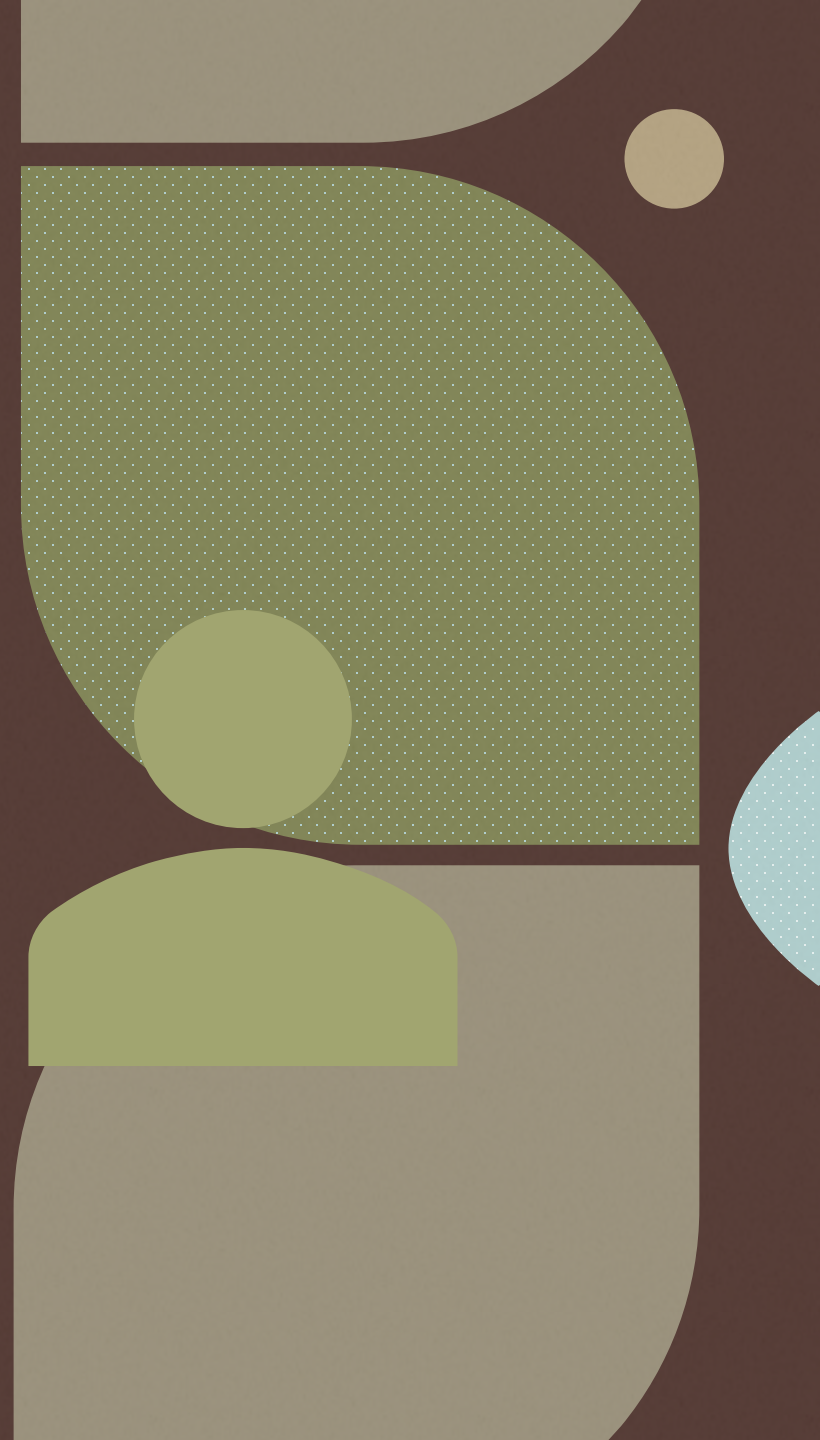
# Repeat Citations

- CAP is different
- Additional Audits





# ACME State and Local Workgroup

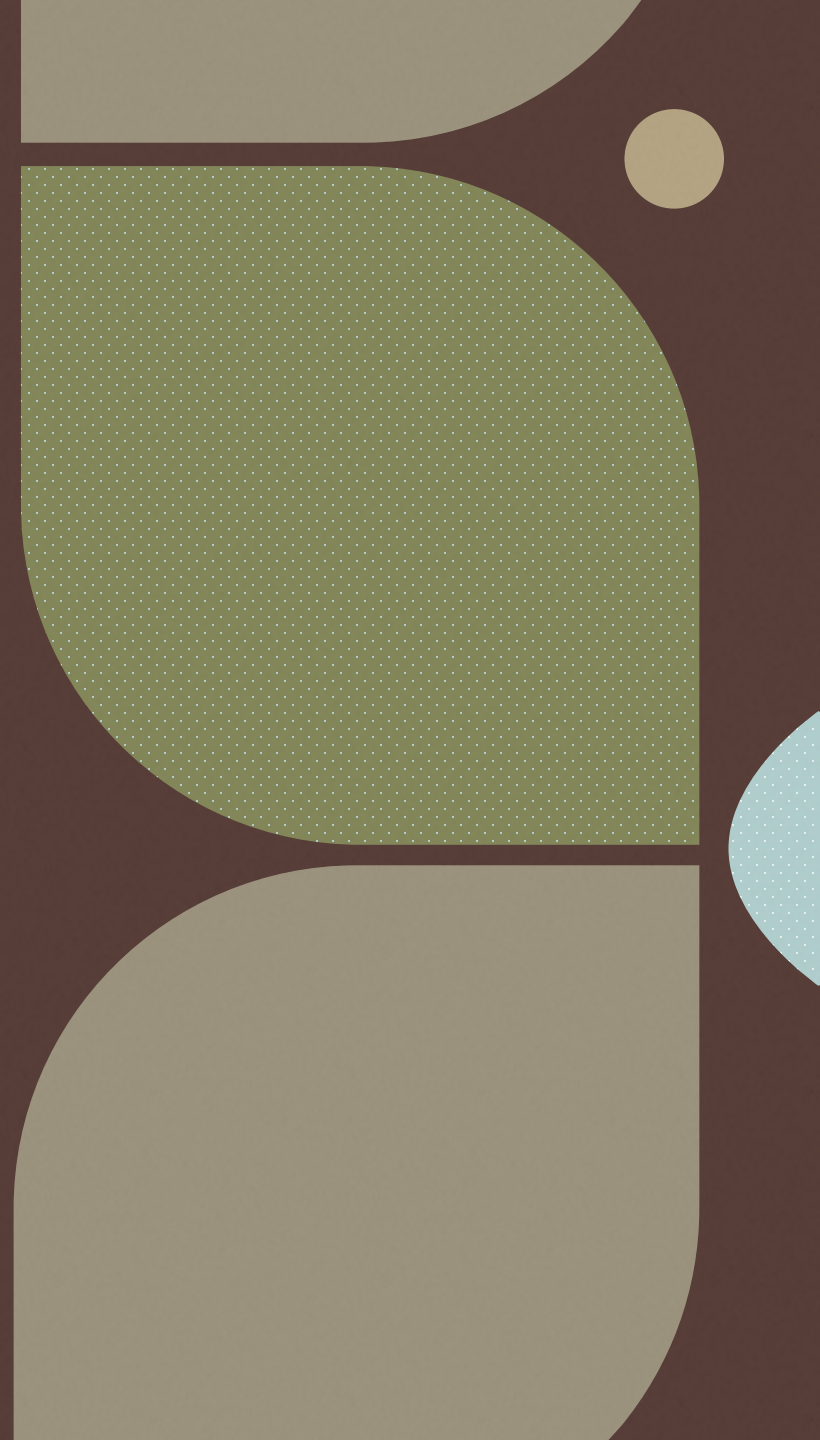


# Reminders

- Management Evaluation Record Review Webcast -2022
- Scheduling MEs for 2024
- ME Webcast – January 25, 2024, at 9:30am

# Thank you!

- Nancy Erickson, MS, RD
- EricksonN@michigan.gov



# Heather Sanders, MA, CLS

## Public Health Consultant

*SandersH@michigan.gov*

# Recent Notification Updates:

- Additional new appointments/notifications implemented in July 2023.

Appointment	MI-WIC Abbreviation	Purpose of Appointment
Virtual Certification	CERTV	To be used to schedule a virtual certification appointment under the ARPA waivers – appointment must meet allowance criteria.
Virtual Priority Certification	PCERTV	To be used to schedule a virtual priority certification appointment under the ARPA physical presence waiver – appointment must meet waiver criteria.
Virtual Recertification	RECERTV	To be used to schedule a virtual recertification appointment under the ARPA waivers – appointment must meet allowance criteria.
Virtual Child Evaluation	CEVALV	To be used to schedule a virtual child evaluation. *Please note: Mid-Certification Health Evaluation Policy. This policy will be available soon.
Virtual Infant Evaluation	IEVALV	To be used to schedule a virtual infant evaluation. *Please note: Mid-Certification Health Evaluation Policy. This policy will be available soon.
Lab	LAB	This appointment is intended for local agencies to use to schedule an appointment for Anthro/Lab for a client. *Please note: Mid-Certification Health Evaluation Policy. This policy will be available soon.



### Virtual WIC Appointment Details:


Please note the type of appointment you are scheduled for at the beginning of the text message you received. Provide the information below for the appointment type listed in your text message before or during your appointment. Your WIC office can tell you how to share this information with them. Call the number in your text message with questions.

### **Virtual WIC Certification or Recertification Appointment:**


- Length/Height
- Weight
- Head Circumference (if under 2 years old)
- Bloodwork – Hemoglobin (if 1 year or older)
- **Proofs Required:**
  - Identity
  - Address
  - Household income or proof of Medicaid
  - If pregnant, proof of pregnancy


### **Virtual WIC IEVAL (Infant Evaluation) or CEVAL (Child Evaluation):**

- Length/Height



# MI-WIC Blast Messaging Guidelines:

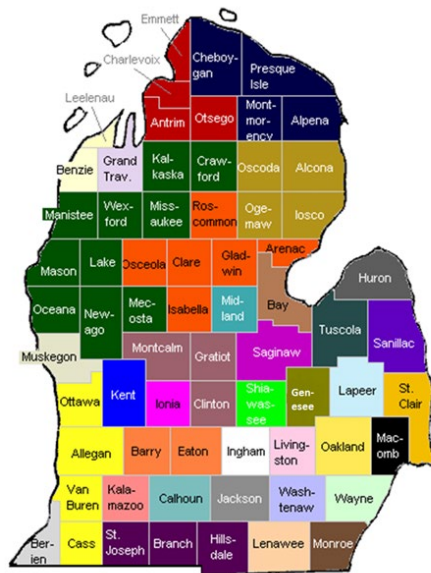


- Messages entered in MI-WIC are sent to One Call Now every 2 hours, between the hours of 8am – 5pm.
    - If you are entering a message in the MI-WIC screen after 5pm DO NOT mark for it to be sent today, as it will not be sent after 5pm. Please mark it with a “Send Later Date” of the following day to ensure it is sent out the next morning.
    - Messages are sent by One Call Now to clients between 8am – 7pm.
    - [MI-WIC Blast Messaging Guidelines \(michigan.gov\)](https://michigan.gov/mi-wic/0,4570,7-293_7-294_7-295_7-296_7-297_7-298_7-299_7-300_7-301_7-302_7-303_7-304_7-305_7-306_7-307_7-308_7-309_7-310_7-311_7-312_7-313_7-314_7-315_7-316_7-317_7-318_7-319_7-320_7-321_7-322_7-323_7-324_7-325_7-326_7-327_7-328_7-329_7-330_7-331_7-332_7-333_7-334_7-335_7-336_7-337_7-338_7-339_7-340_7-341_7-342_7-343_7-344_7-345_7-346_7-347_7-348_7-349_7-350_7-351_7-352_7-353_7-354_7-355_7-356_7-357_7-358_7-359_7-360_7-361_7-362_7-363_7-364_7-365_7-366_7-367_7-368_7-369_7-370_7-371_7-372_7-373_7-374_7-375_7-376_7-377_7-378_7-379_7-380_7-381_7-382_7-383_7-384_7-385_7-386_7-387_7-388_7-389_7-390_7-391_7-392_7-393_7-394_7-395_7-396_7-397_7-398_7-399_7-400_7-401_7-402_7-403_7-404_7-405_7-406_7-407_7-408_7-409_7-410_7-411_7-412_7-413_7-414_7-415_7-416_7-417_7-418_7-419_7-420_7-421_7-422_7-423_7-424_7-425_7-426_7-427_7-428_7-429_7-430_7-431_7-432_7-433_7-434_7-435_7-436_7-437_7-438_7-439_7-440_7-441_7-442_7-443_7-444_7-445_7-446_7-447_7-448_7-449_7-450_7-451_7-452_7-453_7-454_7-455_7-456_7-457_7-458_7-459_7-460_7-461_7-462_7-463_7-464_7-465_7-466_7-467_7-468_7-469_7-470_7-471_7-472_7-473_7-474_7-475_7-476_7-477_7-478_7-479_7-480_7-481_7-482_7-483_7-484_7-485_7-486_7-487_7-488_7-489_7-490_7-491_7-492_7-493_7-494_7-495_7-496_7-497_7-498_7-499_7-500_7-501_7-502_7-503_7-504_7-505_7-506_7-507_7-508_7-509_7-510_7-511_7-512_7-513_7-514_7-515_7-516_7-517_7-518_7-519_7-520_7-521_7-522_7-523_7-524_7-525_7-526_7-527_7-528_7-529_7-530_7-531_7-532_7-533_7-534_7-535_7-536_7-537_7-538_7-539_7-540_7-541_7-542_7-543_7-544_7-545_7-546_7-547_7-548_7-549_7-550_7-551_7-552_7-553_7-554_7-555_7-556_7-557_7-558_7-559_7-560_7-561_7-562_7-563_7-564_7-565_7-566_7-567_7-568_7-569_7-570_7-571_7-572_7-573_7-574_7-575_7-576_7-577_7-578_7-579_7-580_7-581_7-582_7-583_7-584_7-585_7-586_7-587_7-588_7-589_7-590_7-591_7-592_7-593_7-594_7-595_7-596_7-597_7-598_7-599_7-600_7-601_7-602_7-603_7-604_7-605_7-606_7-607_7-608_7-609_7-610_7-611_7-612_7-613_7-614_7-615_7-616_7-617_7-618_7-619_7-620_7-621_7-622_7-623_7-624_7-625_7-626_7-627_7-628_7-629_7-630_7-631_7-632_7-633_7-634_7-635_7-636_7-637_7-638_7-639_7-640_7-641_7-642_7-643_7-644_7-645_7-646_7-647_7-648_7-649_7-650_7-651_7-652_7-653_7-654_7-655_7-656_7-657_7-658_7-659_7-660_7-661_7-662_7-663_7-664_7-665_7-666_7-667_7-668_7-669_7-670_7-671_7-672_7-673_7-674_7-675_7-676_7-677_7-678_7-679_7-680_7-681_7-682_7-683_7-684_7-685_7-686_7-687_7-688_7-689_7-690_7-691_7-692_7-693_7-694_7-695_7-696_7-697_7-698_7-699_7-700_7-701_7-702_7-703_7-704_7-705_7-706_7-707_7-708_7-709_7-710_7-711_7-712_7-713_7-714_7-715_7-716_7-717_7-718_7-719_7-720_7-721_7-722_7-723_7-724_7-725_7-726_7-727_7-728_7-729_7-730_7-731_7-732_7-733_7-734_7-735_7-736_7-737_7-738_7-739_7-740_7-741_7-742_7-743_7-744_7-745_7-746_7-747_7-748_7-749_7-750_7-751_7-752_7-753_7-754_7-755_7-756_7-757_7-758_7-759_7-760_7-761_7-762_7-763_7-764_7-765_7-766_7-767_7-768_7-769_7-770_7-771_7-772_7-773_7-774_7-775_7-776_7-777_7-778_7-779_7-780_7-781_7-782_7-783_7-784_7-785_7-786_7-787_7-788_7-789_7-790_7-791_7-792_7-793_7-794_7-795_7-796_7-797_7-798_7-799_7-800_7-801_7-802_7-803_7-804_7-805_7-806_7-807_7-808_7-809_7-810_7-811_7-812_7-813_7-814_7-815_7-816_7-817_7-818_7-819_7-820_7-821_7-822_7-823_7-824_7-825_7-826_7-827_7-828_7-829_7-830_7-831_7-832_7-833_7-834_7-835_7-836_7-837_7-838_7-839_7-840_7-841_7-842_7-843_7-844_7-845_7-846_7-847_7-848_7-849_7-850_7-851_7-852_7-853_7-854_7-855_7-856_7-857_7-858_7-859_7-860_7-861_7-862_7-863_7-864_7-865_7-866_7-867_7-868_7-869_7-870_7-871_7-872_7-873_7-874_7-875_7-876_7-877_7-878_7-879_7-880_7-881_7-882_7-883_7-884_7-885_7-886_7-887_7-888_7-889_7-890_7-891_7-892_7-893_7-894_7-895_7-896_7-897_7-898_7-899_7-900_7-901_7-902_7-903_7-904_7-905_7-906_7-907_7-908_7-909_7-910_7-911_7-912_7-913_7-914_7-915_7-916_7-917_7-918_7-919_7-920_7-921_7-922_7-923_7-924_7-925_7-926_7-927_7-928_7-929_7-930_7-931_7-932_7-933_7-934_7-935_7-936_7-937_7-938_7-939_7-940_7-941_7-942_7-943_7-944_7-945_7-946_7-947_7-948_7-949_7-950_7-951_7-952_7-953_7-954_7-955_7-956_7-957_7-958_7-959_7-960_7-961_7-962_7-963_7-964_7-965_7-966_7-967_7-968_7-969_7-970_7-971_7-972_7-973_7-974_7-975_7-976_7-977_7-978_7-979_7-980_7-981_7-982_7-983_7-984_7-985_7-986_7-987_7-988_7-989_7-990_7-991_7-992_7-993_7-994_7-995_7-996_7-997_7-998_7-999_8000)
- 

# 2023 Coordinator Summit Resources

- [Coordinator Summit – MI WIC Events](#)
  - Slides, resources, and the coordinator map will be available on this page.

Michigan WIC Coordinators by County



Michigan WIC Coordinators by County





# 2024 Michigan WIC Coordinator Summit

**SAVE THE DATE!**



**COORDINATOR  
SUMMIT**

Let's Reconnect: It Starts With Us

**October  
29-30, 2024**

**Mt. Pleasant Comfort Inn & Suites  
Hotel and Conference Center**

2424 SOUTH MISSION STREET  
MOUNT PLEASANT, MI 48858



# We need you!

---

- Planning team volunteers:
  - Are you interested in joining the planning team for the 2024 Coordinator Summit? Please contact Heather Sanders at [Sandersh@michigan.gov](mailto:Sandersh@michigan.gov).
  - We welcome new and returning planning team members.

A large blue circle on the right side of the slide contains the text 'VOLUNTEER RECRUITMENT' in white, bold, sans-serif capital letters. The background of the entire slide is a blurred image of several hands raised, with the blue circle overlapping the center of this image.

# VOLUNTEER RECRUITMENT



# Planning Team Responsibilities

- Meet monthly on the 2<sup>nd</sup> Tuesday of the month from 1:30pm – 2:30pm via TEAMS.
- Meetings run from January – November (may be bi-monthly from January – April depending on need).
- Assist planning team with choosing Summit sessions/speakers and fun activities.

# 2023 Coordinator Summit Planning Team

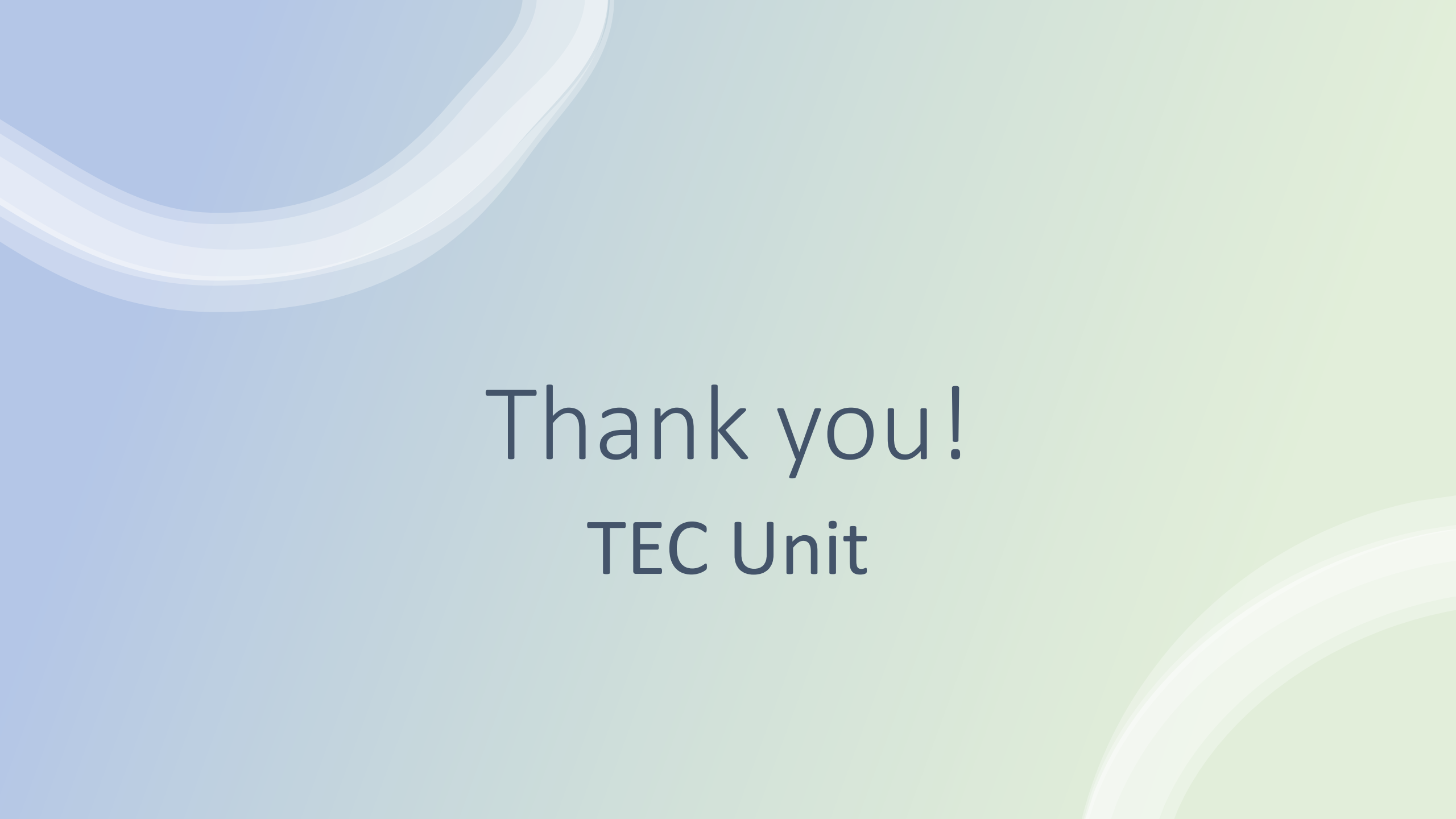
thank you!

- **Local Agency Team Members:**

- Kelly Conley, Central Michigan District HD
- Laurel McCamman, BEDHD
- Megan Schultz, Mid-MI District HD
- Tracie Bolton (MWA Representative), Ingham County HD
- Kali Jones, Intercare Community Health Network
- Gayathri Akella, Washtenaw Co. Public Health
- Abigail Bishop, Kent County HD
- Mariah Kaufman, Benzie-Leelanau District HD
- Lisa Banks, Oakland County
- Gayathri Akella, Washtenaw County

- **State of Michigan (SOM)/Michigan Public Health Institute (MPHI) Staff:**

- Sami Chau, MPHI
- Amy Dotson, SOM
- Madhur Chandra, SOM
- Katherine Groble, SOM
- Kristen Hanulcik, SOM
- Christina Herring-Johnson, SOM
- Whitney Jackson, SOM
- Dionne Moore-Smith, SOM
- Michelle Moore, SOM
- Heather Sanders, SOM
- Kait Skwir, SOM
- Shawn Gompa, SOM
- Gloria Zunker, SOM
- Dawn Pline, SOM

The background features a light blue-to-green gradient. In the top-left corner, there are several overlapping, wavy, semi-transparent shapes in shades of blue and white. In the bottom-right corner, there are similar overlapping, wavy, semi-transparent shapes in shades of green and white.

Thank you!  
TEC Unit